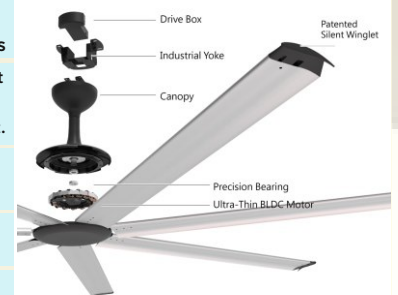
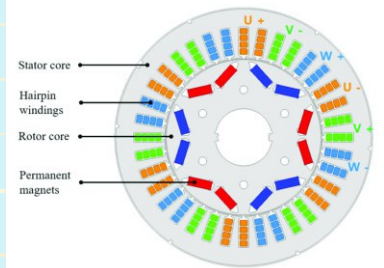


**REVOLUTIONIZING
AIRFLOW WITH INNOVATIVE
PMSM MOTOR TECHNOLOGY**

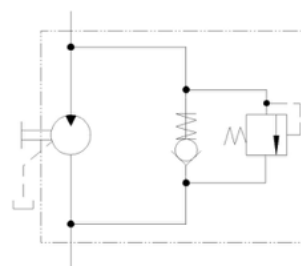
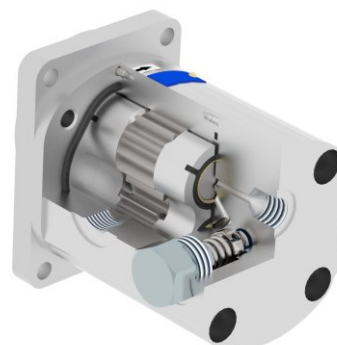
TECHNICAL DATA SHEET - PMSM MOTOR FANS

| Sr.no | Details of Parameters | 24 feet diameter | 20 feet diameter | 18/16 feet diameter | 14 feet diameter |
|-------|--|--|--|--|--|
| 1. | Model No. | PMSM-245 | PMSM-205 | PMSM-165/185 | PMSM-145 |
| 2. | Blade Material | Extruded aluminium airofoil design 6063-T6grade | Extruded aluminium airofoil design 6063-T6grade | Extruded aluminium airofoil design 6063-T6grade | Extruded aluminium airofoil design 6063-T6grade |
| 3. | Motor Make | PMSM Motor | PMSM Motor | PMSM Motor | PMSM Motor |
| 4. | Operating Voltage | 415V-3Phase 230V-1Phase | 415V-3Phase 230V-1Phase | 415V-3Phase 230V-1Phase | 415V-3Phase 230V-1Phase |
| 5. | Current at 50Hz | 2.8Amp/4.6Amp | 2.8Amp/4.6Amp | 2.6/3Amp | 2.6/3Amp |
| 6. | Operating frequency range in Hz | 50Hz | 50Hz | 50Hz | 50Hz |
| 7. | Rotation Direction (Forward / Reverse / Both) | Both | Both | Both | Both |
| 8. | Power Consumption/HR | 1.5Kw | 1.5Kw | 1.1Kw | 0.75kw |
| 9. | Maximum Speed in RPM | 50-55 | 55-60 | 60-75 | 75-80RPM |
| 10. | Noise levels in dB at 1 M | 38 | 38 | 38 | 38 |
| 11. | Motor Torque in Nm | 260 | 260 | 260 | 260 |
| 12. | No. of Blade | 5 | 5 | 5 | 5 |
| 13. | Air flow in CFM | 455000 CFM | 385000 CFM | 295000/245000 CFM | 202500 CFM |
| 14. | Coverage area in Sq.Ft. | 14400 Sq.Ft. | 10000 Sq.Ft. | 8100 Sq.Ft. / 6400 Sq.Ft. | 4900 Sq.Ft. |
| 15. | Area Coverage (inDiameter) | 120 ft | 100 ft | 90 ft / 80 ft | 70ft |
| 16. | Gross weight in Kgs | 90Kg | 75Kg | 55Kg | 50Kg |
| 17. | Colour of Blade | Anodized / Powder | Anodized / Powder | Anodized / Powder | Anodized / Powder |
| 18. | Blade Angle in degree | 17 degrees | 17 degrees | 17 degrees | 17 degrees |
| 19. | Type of Material & Al. alloy grade for blade | PMSM-245 | PMSM-205 | PMSM-165/185 | PMSM-145 |
| 20. | Type & Cast Al. alloy grade for Clamping Assembly | Single Piece Anti Corrosive Aluminium Clamps | Single Piece Anti Corrosive Aluminium Clamps | Single Piece Anti Corrosive Aluminium Clamps | Single Piece Anti Corrosive Aluminium Clamps |
| 21. | VFD Ip55 & make | Delta or VICHl Built in protective module can Auto cut off for accident. | Delta or VICHl Built in protective module can Auto cut off for accident. | Delta or VICHl Built in protective module can Auto cut off for accident. | Delta or VICHl Built in protective module can Auto cut off for accident. |
| 22. | Suitable to install on slope ceiling & heavy brackets | Yes | Yes | Yes | Yes |
| 23. | Blade toppers above blades & safety ring | Yes | Yes | Yes | Yes |
| 24. | Safety clips | Yes | Yes | Yes | Yes |
| 25. | Size of Power Cables | 30mtr long 4Core | 30mtr long 4Core | 30mtr long 4Core | 30mtr long 4Core |
| 26. | Size & Type of safety wires | 5mm - 30mtr long Plastic Coated | 5mm - 30mtr long Plastic Coated | 5mm - 30mtr long Plastic Coated | 5mm - 30mtr long Plastic Coated |
| 27. | Warranty -2years for entire machine | Yes, 2yrs. for the entire machine | Yes, 2yrs. for the entire machine | Yes, 2yrs. for the entire machine | Yes, 2yrs. for the entire machine |
| 28. | Warranty exclusion if any | Physical damage to fan assembly, Fan relocated without notice | Physical damage to fan assembly, Fan relocated without notice | Physical damage to fan assembly, Fan relocated without notice | Physical damage to fan assembly, Fan relocated without notice |
| 29. | Total life of fan in years | 15Years+ | 15Years+ | 15Years+ | 15Years+ |
| 30. | Confirm suitable for continuous round the clock (24x7) operation | Yes | Yes | Yes | Yes |



TECHNICAL DATA SHEET - GEAR MOTOR FANS

| Sr.no | Details of Parameters | 24 feet diameter | 20 feet diameter | 18/16 feet diameter | 14 feet diameter |
|-------|--|---|---|---|---|
| 1. | Model No. | EVEG-24/5 | EVEG-20/5 | EVEG-18/5 | EVEG-14/5 |
| 2. | Blade Material | Extruded aluminium airofoil design 6063-T6grade | Extruded aluminium airofoil design 6063-T6grade | Extruded aluminium airofoil design 6063-T6grade | Extruded aluminium airofoil design 6063-T6grade |
| 3. | Motor Make | Seweuro Drive Gear Motor (German Make) | Seweuro Drive Gear Motor (German Make) | Seweuro Drive Gear Motor (German Make) | Seweuro Drive Gear Motor (German Make) |
| 4. | Operating Voltage | 415V-3Phase | 415V-3Phase | 415V-3Phase | 415V-3Phase |
| 5. | Current at 50Hz | 3.20 Amp | 3.20 Amp | 2.40 Amp | 2.40 Amp |
| 6. | Operating frequency range in Hz | 50Hz | 50Hz | 50Hz | 50Hz |
| 7. | Rotation Direction (Forward / Reverse / Both) | Both | Both | Both | Both |
| 8. | Power Consumption/HR | 1.5 Kw | 1.5 Kw | 1.1 Kw | 1.1 kw |
| 9. | Maximum Speed in RPM | 50-55 | 55-60 | 60-90 | 90-100 |
| 10. | Noise levels in dB at 1 M | 60 | 60 | 60 | 60 |
| 11. | Motor Torque in Nm | 260 | 260 | 260 | 260 |
| 12. | No. of Blade | 5 | 5 | 5 | 5 |
| 13. | Air flow in CFM | 455000 CFM | 385000 CFM | 295000/245000 CFM | 190000 CFM |
| 14. | Coverage area in Sq.Ft. | 14400 Sq.Ft. | 10000 Sq.Ft. | 8100 Sq.Ft. / 6400 Sq.Ft. | 4500 Sq.Ft. |
| 15. | Area Coverage (inDiameter) | 120 ft | 100 ft | 90 ft / 80 ft | 70ft |
| 16. | Gross weight in Kgs | 140Kg | 140Kg | 130Kg | 120Kg |
| 17. | Colour of Blade | Anodized / Black Powder Coated | Anodized / Black Powder Coated | Anodized / Black Powder Coated | Anodized / Black Powder Coated |
| 18. | Blade Angle in degree | 17 degrees | 17 degrees | 17 degrees | 17 degrees |
| 19. | Type of Material & Al. alloy grade for blade | Aerofoil Blade's are High Strength Aluminum 6063-T6 Grade | Aerofoil Blade's are High Strength Aluminum 6063-T6 Grade | Aerofoil Blade's are High Strength Aluminum 6063-T6 Grade | Aerofoil Blade's are High Strength Aluminum 6063-T6 Grade |
| 20. | Type & Cast Al. alloy grade for Clamping Assembly | Pressure Dia Cast LM6,Signal Piece Aluminium Hub | Pressure Dia Cast LM6,Signal Piece Aluminium Hub | Pressure Dia Cast LM6,Signal Piece Aluminium Hub | Pressure Dia Cast LM6,Signal Piece Aluminium Hub |
| 21. | VFD Ip55 & make | Delta | Delta | Delta | Delta |
| 22. | Control Panel BMS Protocol | MODBUS RTU | MODBUS RTU | MODBUS RTU | MODBUS RTU |
| 23. | Gear Box Output Shaft Bearing | Heavy Duty Tapered Roller Bearings | Heavy Duty Tapered Roller Bearings | Heavy Duty Tapered Roller Bearings | Heavy Duty Tapered Roller Bearings |
| 24. | Fan Hub Assembly With Gear Motor Shaft | Taper Lock Bush (32NM) | Taper Lock Bush (32NM) | Taper Lock Bush (32NM) | Taper Lock Bush (32NM) |
| 25. | Safety clips | Yes | Yes | Yes | Yes |
| 26. | Size of Power Cables | 30mtr long 4Core | 30mtr long 4Core | 30mtr long 4Core | 30mtr long 4Core |
| 27. | Size & Type of safety wires | 5mm - 30mtr long Plastic Coated | 5mm - 30mtr long Plastic Coated | 5mm - 30mtr long Plastic Coated | 5mm - 30mtr long Plastic Coated |
| 28. | Warranty exclusion if any | Physical damage to fan assembly, Fan relocated without notice | Physical damage to fan assembly, Fan relocated without notice | Physical damage to fan assembly, Fan relocated without notice | Physical damage to fan assembly, Fan relocated without notice |
| 29. | Total life of fan in years | 15Years+ | 15Years+ | 15Years+ | 15Years+ |
| 30. | Confirm suitable for continuous round the clock (24x7) operation | Yes | Yes | Yes | Yes |



"WE OFFER FREELANCE AUTOMATION SERVICES FOR ALL THE FOLLOWING BRANDS."



SIEMENS



OUR CLIENTS



porite
Powder Metallurgy Specialist



CONTACT US

+91 9518995303 / +91 9689626650 / +91 9503312853

✉ envirovertex570@gmail.com

🌐 www.envirovortex.com

📍 Office no-A102, Sahyadri Shrubbery,
Shivroad, Borhadewadi, Pimpri Chinchwad,
Pune-412105, MH, India.



Scan to visit website